

(Mouse) Gnl3 Antibody (C-term)
Purified Rabbit Polyclonal Antibody (Pab)
Catalog # AP21045a

Specification

(Mouse) Gnl3 Antibody (C-term) - Product Information

| | |
|-------------------|------------------------|
| Application | WB,E |
| Primary Accession | O8C111 |
| Reactivity | Mouse |
| Host | Rabbit |
| Clonality | Polyclonal |
| Isotype | Rabbit IgG |
| Calculated MW | 60786 |

(Mouse) Gnl3 Antibody (C-term) - Additional Information

Gene ID 30877

Other Names

Guanine nucleotide-binding protein-like 3, Nucleolar GTP-binding protein 3, Nucleostemin, Gnl3, Ns

Target/Specificity

This Mouse Gnl3 antibody is generated from a rabbit immunized with a KLH conjugated synthetic peptide between 450-483 amino acids from the C-terminal region of mouse Gnl3.

Dilution

WB~~1:1000

E~~Use at an assay dependent concentration.

Format

Purified polyclonal antibody supplied in PBS with 0.09% (W/V) sodium azide. This antibody is purified through a protein A column, followed by peptide affinity purification.

Storage

Maintain refrigerated at 2-8°C for up to 2 weeks. For long term storage store at -20°C in small aliquots to prevent freeze-thaw cycles.

Precautions

(Mouse) Gnl3 Antibody (C-term) is for research use only and not for use in diagnostic or therapeutic procedures.

(Mouse) Gnl3 Antibody (C-term) - Protein Information

Name Gnl3

Synonyms Ns

Function May be required to maintain the proliferative capacity of stem cells (By similarity).

Stabilizes MDM2 by preventing its ubiquitination, and hence proteasomal degradation.

Cellular Location

Nucleus. Nucleus, nucleolus. Note=Shuttles between the nucleus and nucleolus.
{ECO:0000250|UniProtKB:Q811S9}

Tissue Location

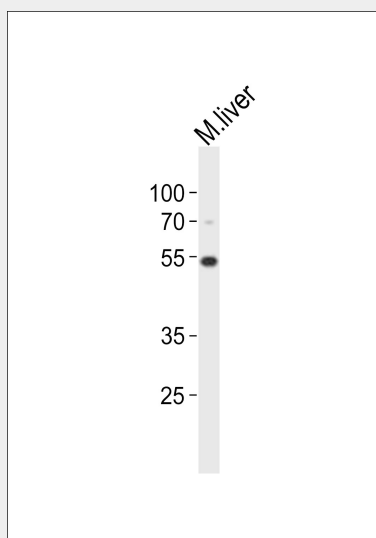
Expressed in the adult bone marrow population that is enriched in hematopoietic stem cells.

(Mouse) Gnl3 Antibody (C-term) - Protocols

Provided below are standard protocols that you may find useful for product applications.

- [Western Blot](#)
- [Blocking Peptides](#)
- [Dot Blot](#)
- [Immunohistochemistry](#)
- [Immunofluorescence](#)
- [Immunoprecipitation](#)
- [Flow Cytometry](#)
- [Cell Culture](#)

(Mouse) Gnl3 Antibody (C-term) - Images



Western blot analysis of lysate from mouse liver tissue lysate, using Gnl3 Antibody (C-term)(Cat. #AP21045a). AP21045a was diluted at 1:1000. A goat anti-rabbit IgG H&L(HRP) at 1:10000 dilution was used as the secondary antibody. Lysate at 20ug.

(Mouse) Gnl3 Antibody (C-term) - Background

May be required to maintain the proliferative capacity of stem cells (By similarity). Stabilizes MDM2 by preventing its ubiquitination, and hence proteasomal degradation.

(Mouse) Gnl3 Antibody (C-term) - References

Tsai R.Y.L.,et al.Genes Dev. 16:2991-3003(2002).
Carninci P.,et al.Science 309:1559-1563(2005).

Trost M., et al. Immunity 30:143-154(2009).
Meng L., et al. Oncogene 30:1716-1726(2011).